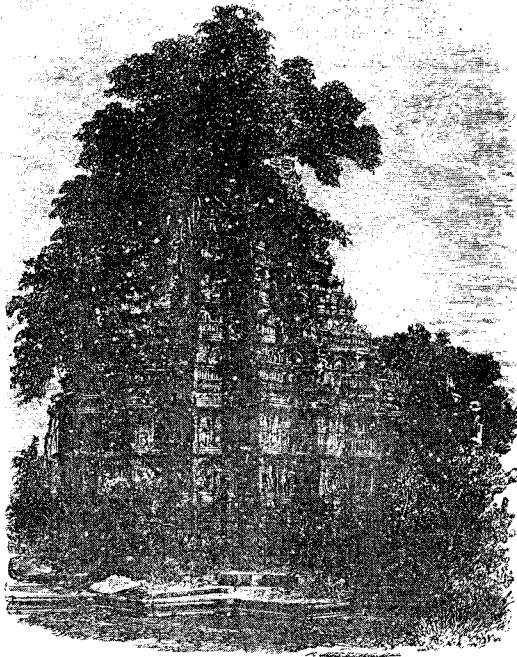
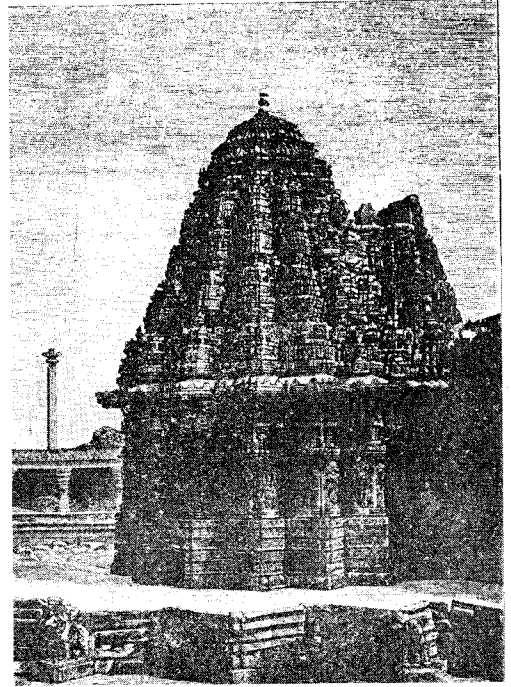


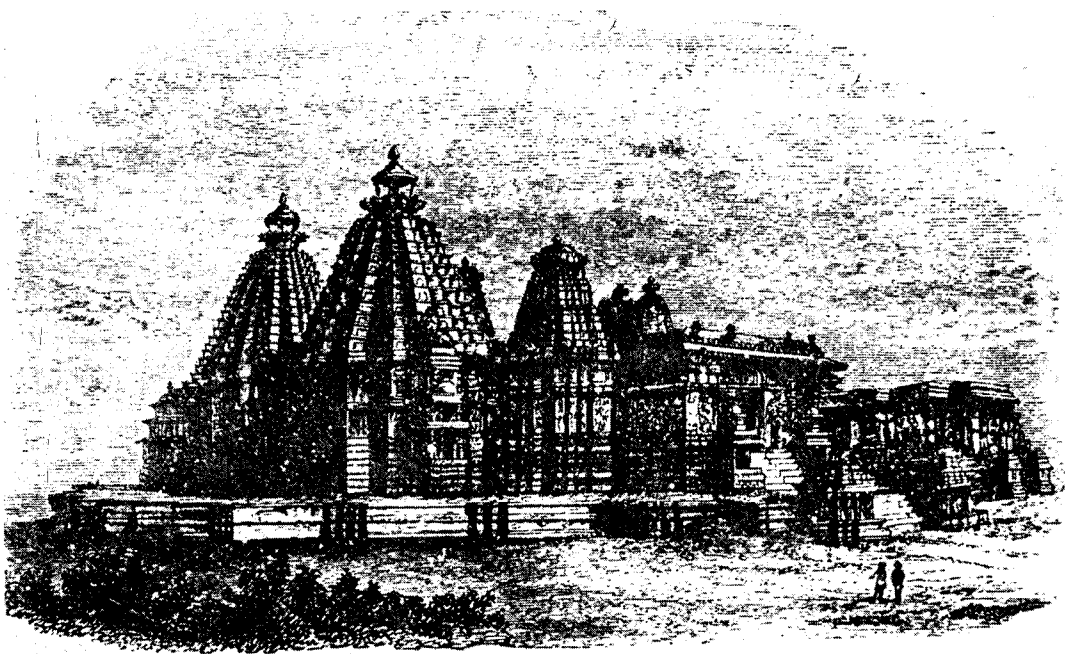
Kedaresvara Temple, Halebid in 1866 (above) and in 1886 (below) before conservation



Kedaresvara Temple, Halebid



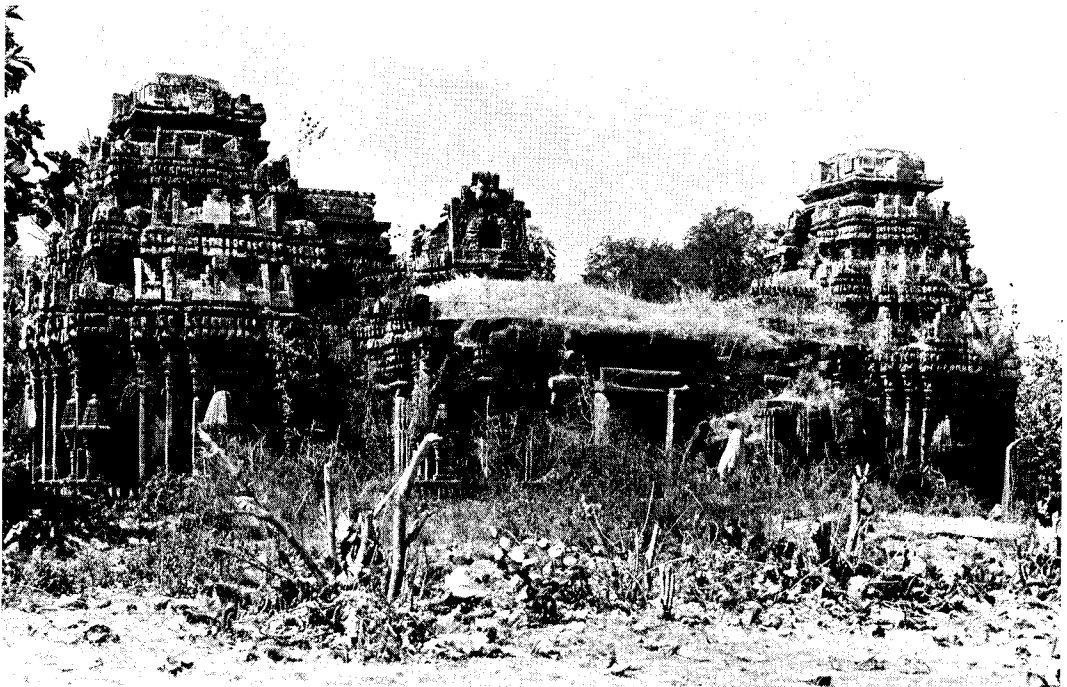
Somanathpura Temple a rear view



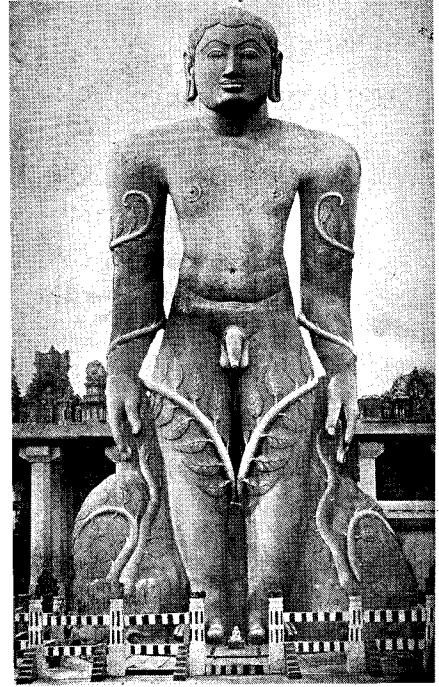
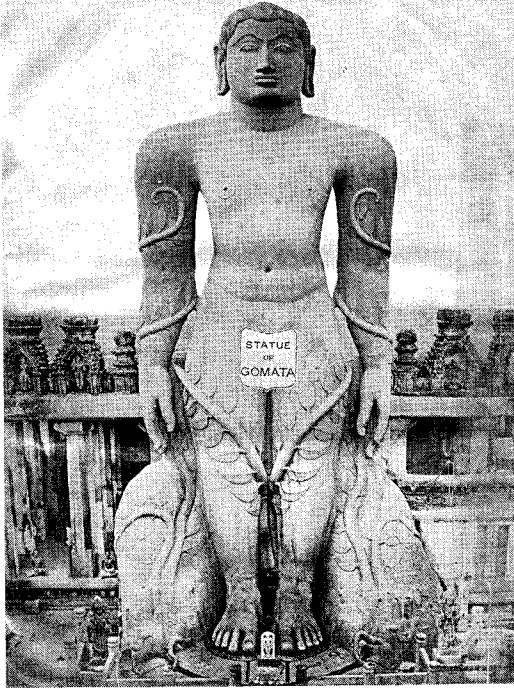
A view of Kedaresvara Temple at Halebid after restoration  
(All these illustrations are from wooden blocks of 1876)



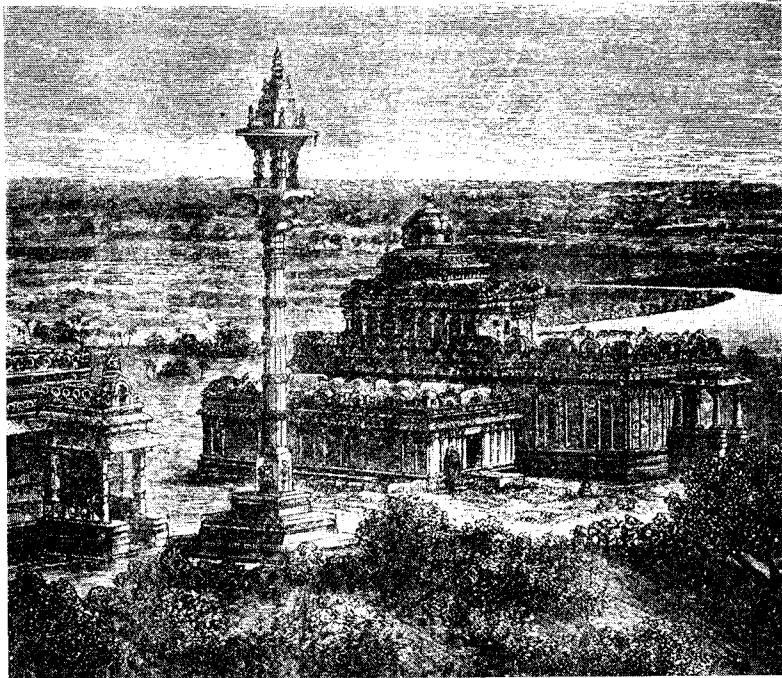
Somnathpur Temple at the beginning of 20th Century, before restoration



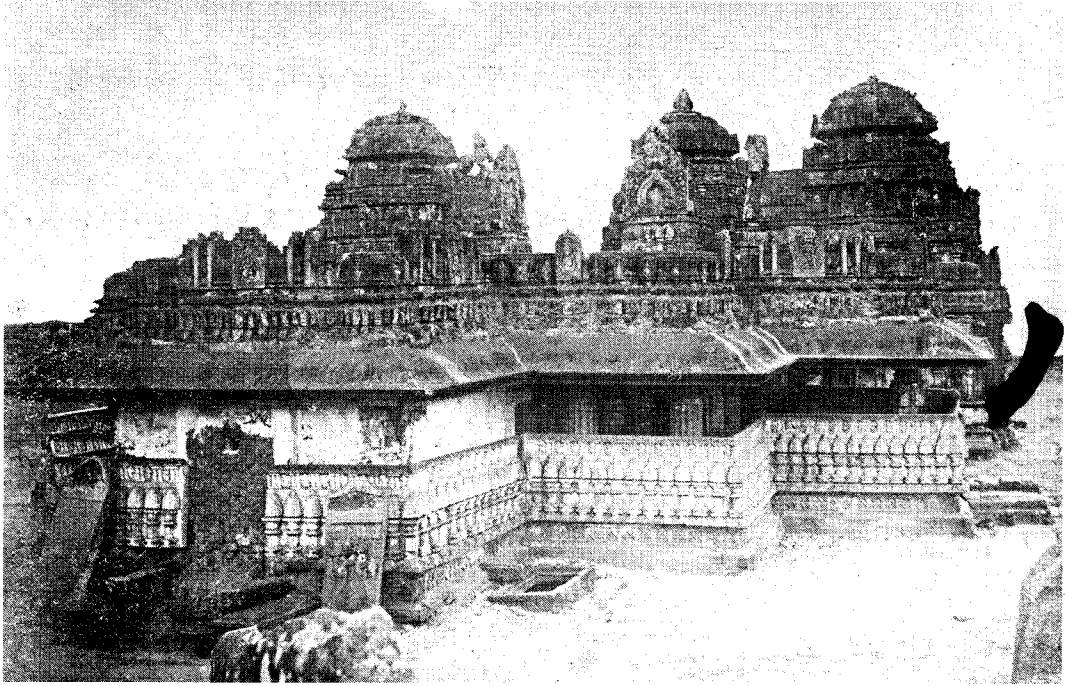
A view of the Trimurthi Narayana Temple in ruins, Bandalike, Shimoga District



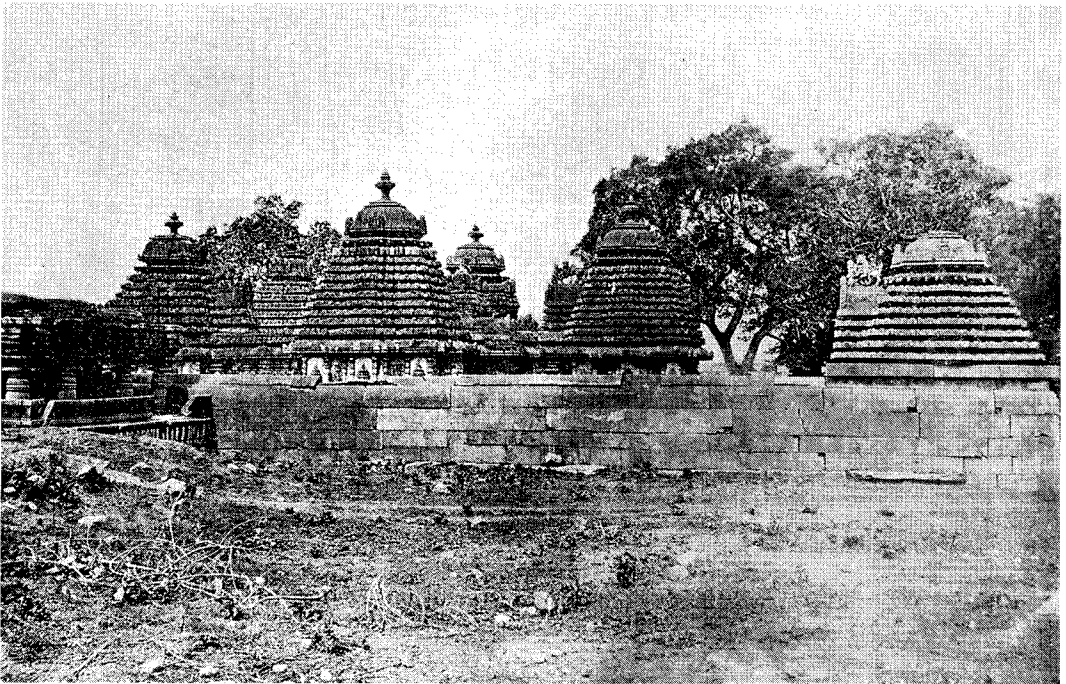
Manolithic statues of Bahubali, Shravanabelagola (1889) (left) and early 20th Century (right)



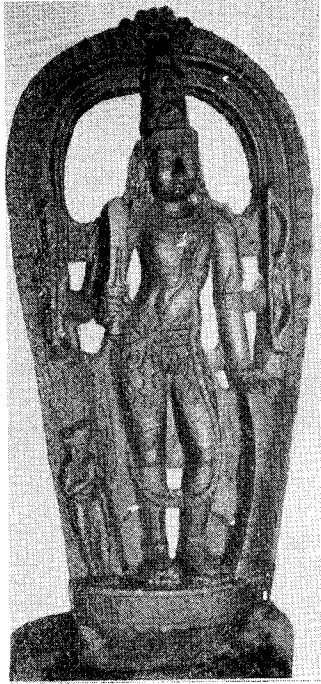
Jaina Basadi Complex at Sravanabelgola - from a wooden block of 1876



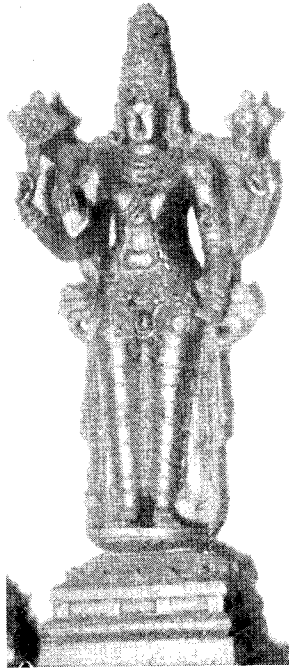
North-East view of Kedareshvara Temple, Balligave, Shimoga District



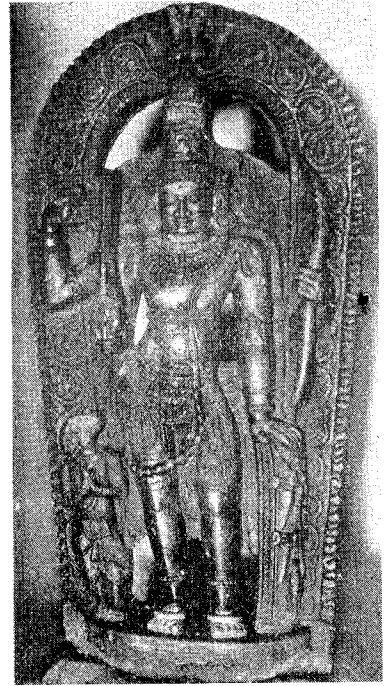
Full view of Lakshmidēvi Temple, Dodda Gaddavalli, Hassan District



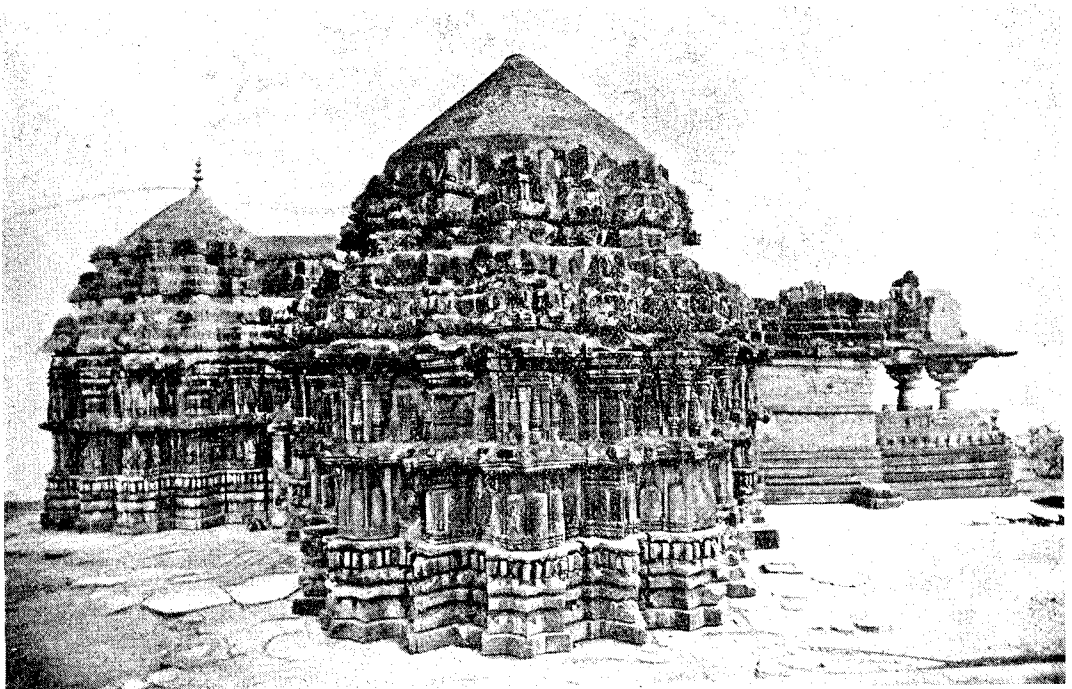
Virabhadra,  
Markandesvara Betta



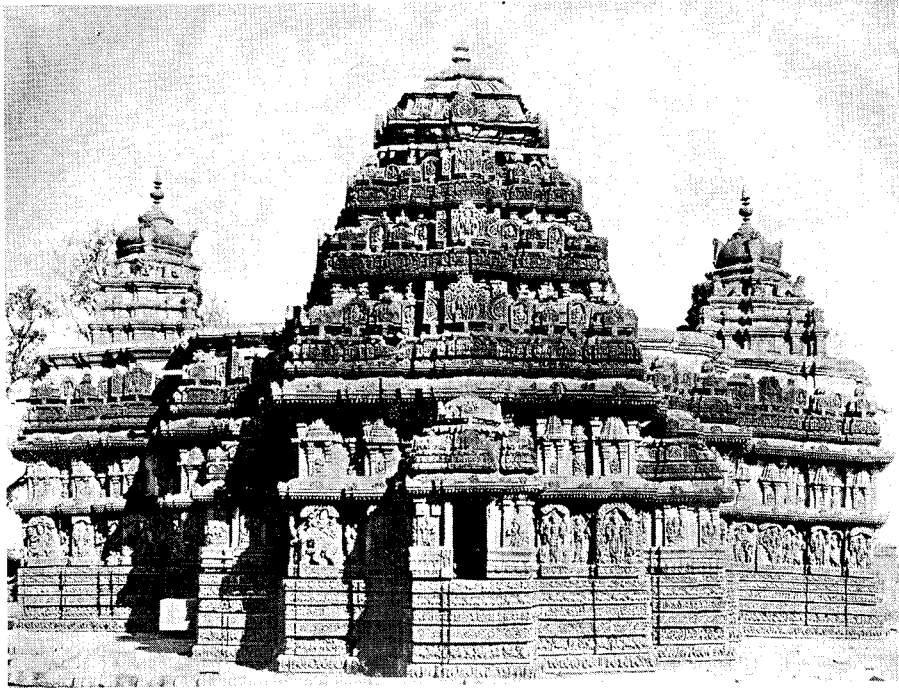
Vishnu, Someshwara Temple  
Kurudumale



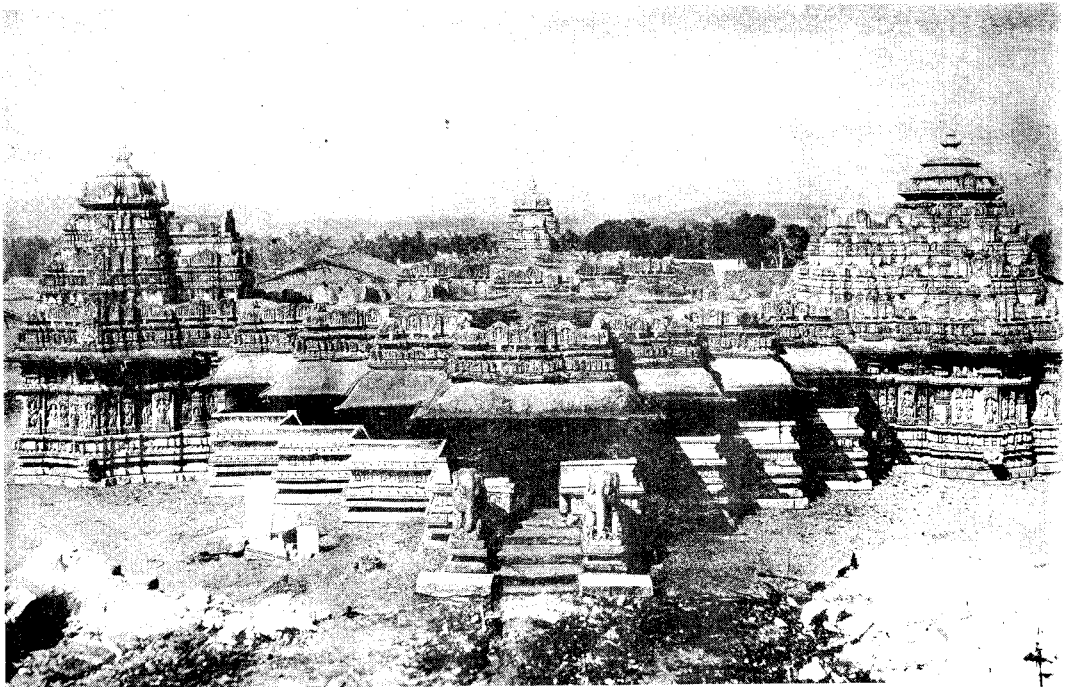
Virabhadra, Mulbagal  
(all from Kolar District)



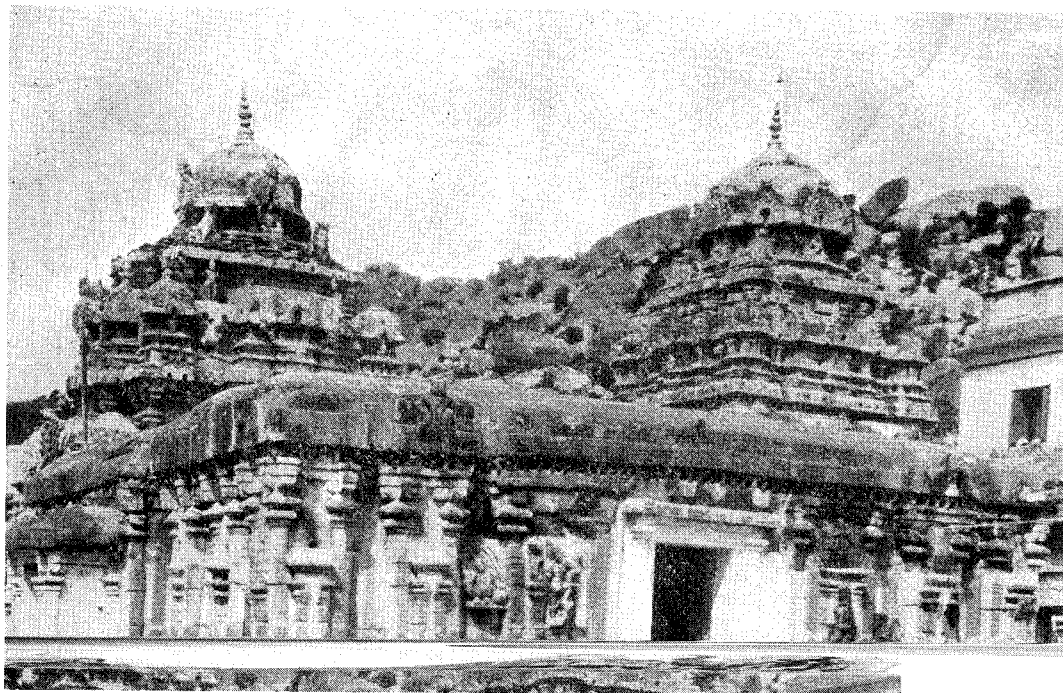
A side view of Lakshminarasimha Temple, Bhadravati, Shimoga District



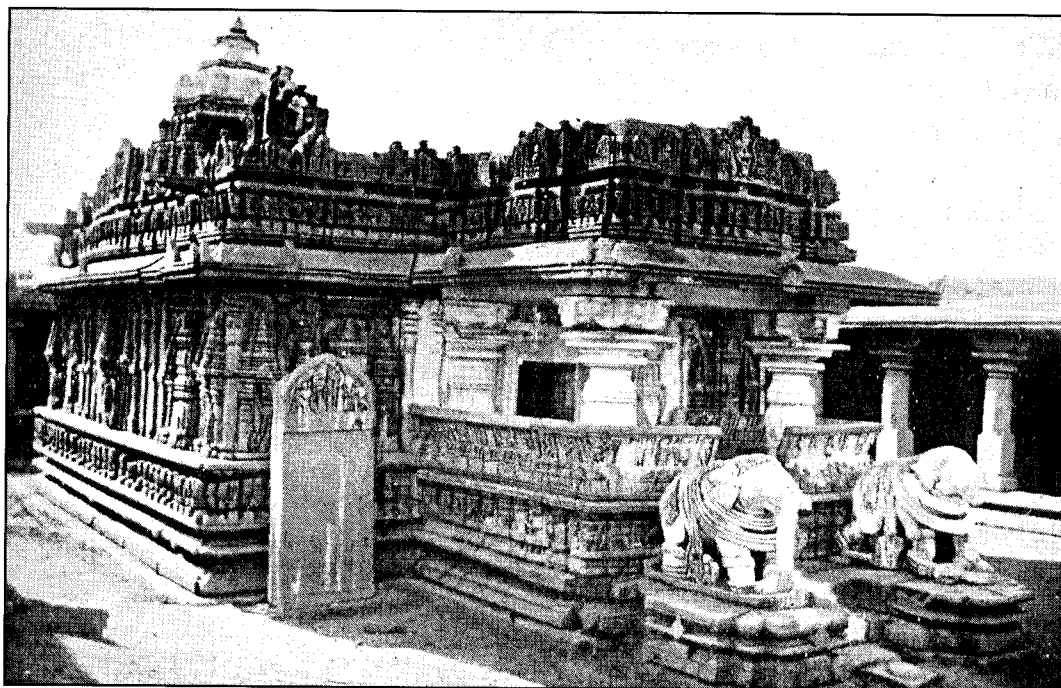
A rear view of the Lakshminarasimha Temple, Nuggehalli, Hassan District



A front view of the Veeranarayana Temple, Belavadi, Chikmagalur District

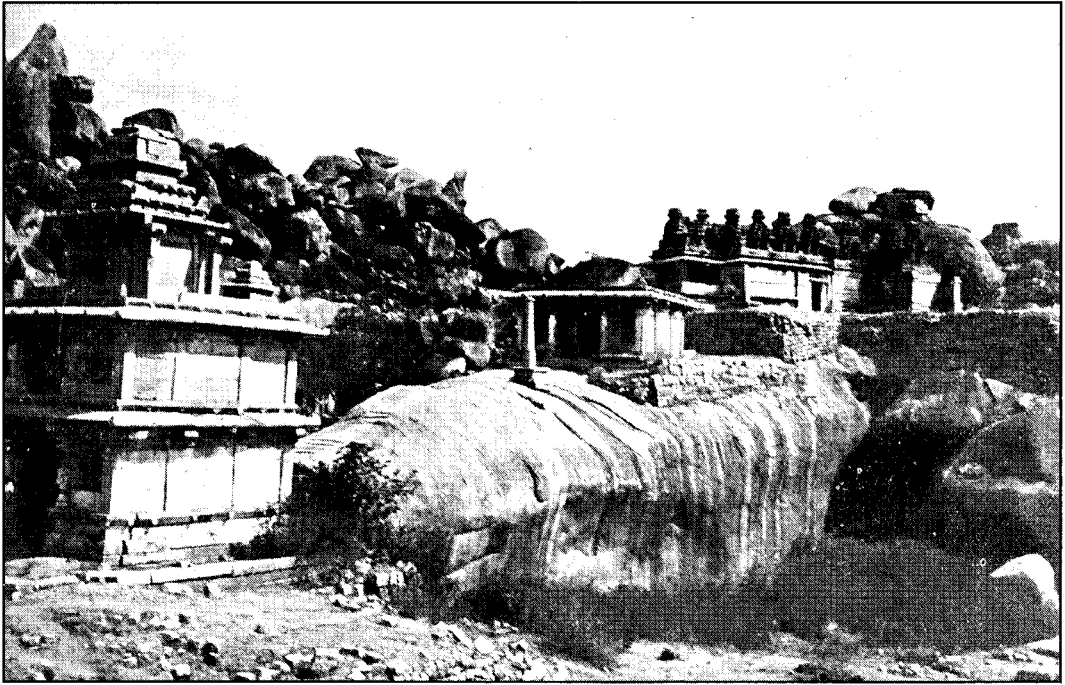


Rameshwara and Lakshmaneshwara a twin Temple, Avani, Kolar District

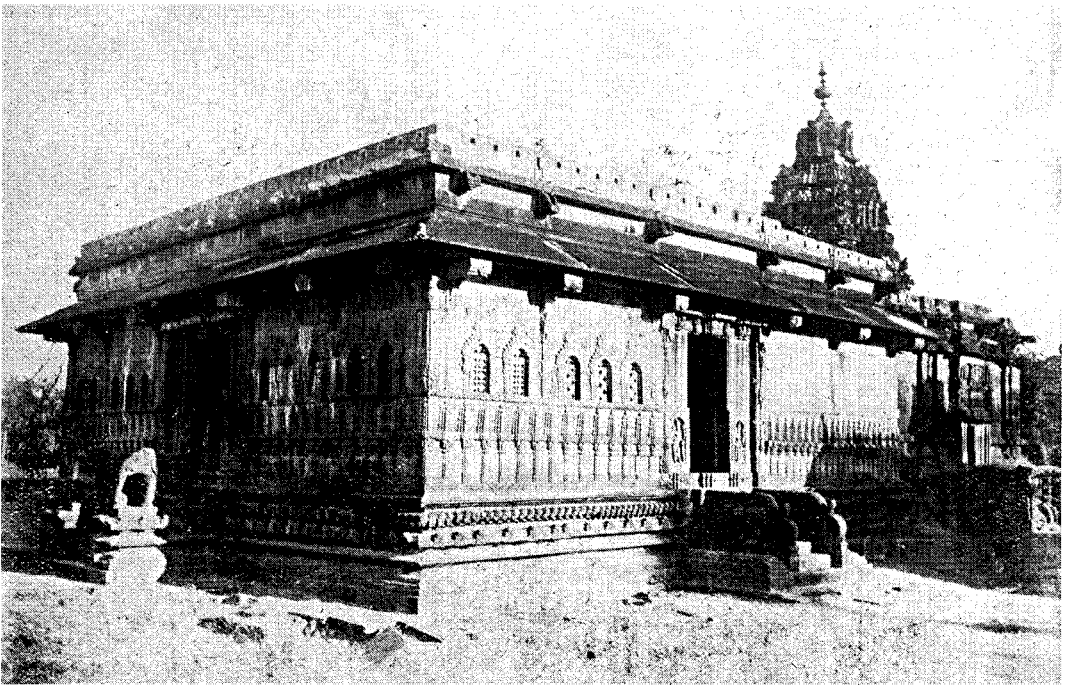


Chennakeshava Temple, Hullekere, Hassan District

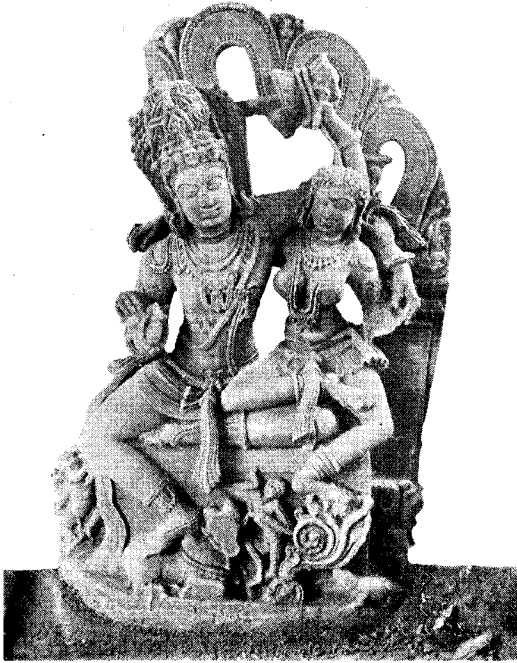




General view of Hidimbeshwara Temple, Chitradurga



A side view of the Aghoreshwara Temple, Ikkeri, Shimoga District



Uma Maheshwara, Panchalingeshwara Temple, Balligave, Shimoga District



Uma Maheshwara, Kalleshwara Temple, Aralaguppe, Tumkur District



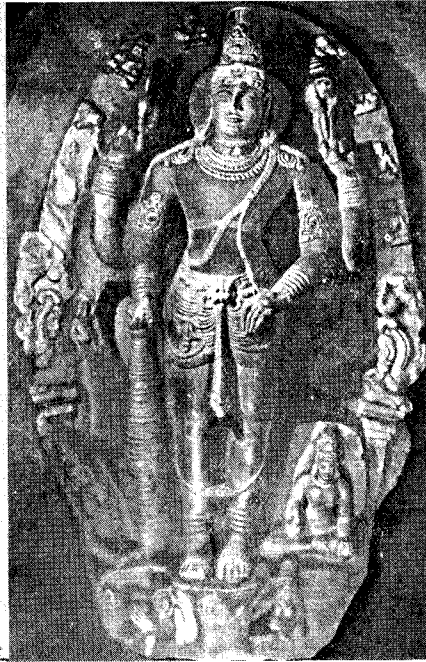
Lakshminarayana, Lakshmikantha Temple, Basavapatna, Hassan District



Lakshmi Narayana, Lakshmi Narayana Temple, Devalapura, Mandya District



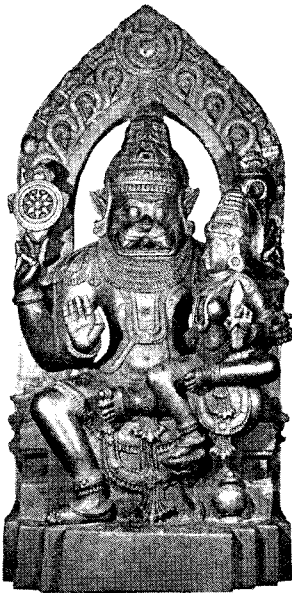
Chennakeshava, Marle  
Chikmagalur District



Madhava, Madhukeshava Temple  
Banavasi, Shimoga District



Surya, Keshava Temple  
Dindigur, Hassan Dt.



Lakshminarasimha,  
Marehalli, Mandya District



Yoga Narasimha, Tonnur,  
Mandy District



Lakshminarasimha,  
Horkakere, Kolar District



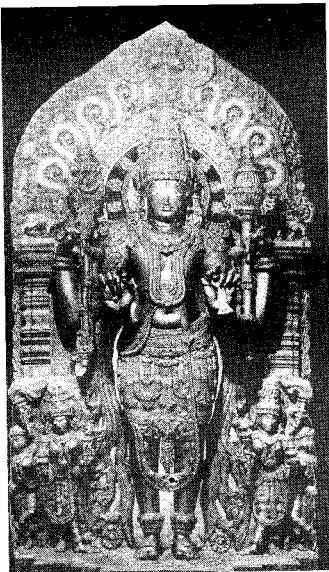
Venugopala, Nonavinakere,  
Tumkur Dt.



Venugopala, Kuppagadde,  
Shimoga Dt.



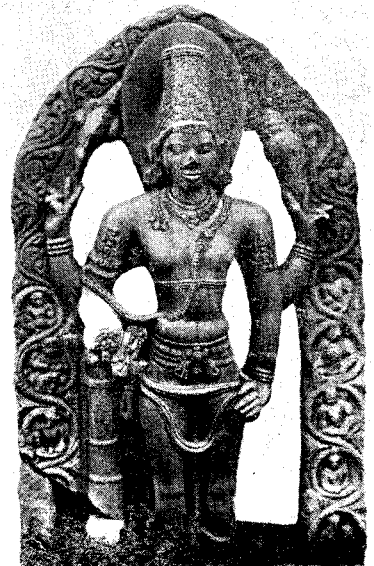
Venugopala, Vighnasanthe,  
Tumkur Dt.



Keshava, Kausika  
Hassan District



Tandaveshwara, Nanjangud  
Mysore District



Janardhana, Narasamangala  
Mysore District



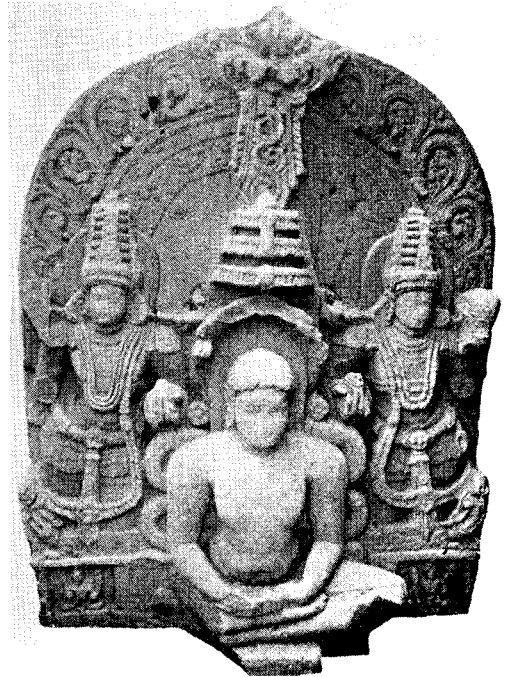
Yaksha, Angadi, Chikmagalur District



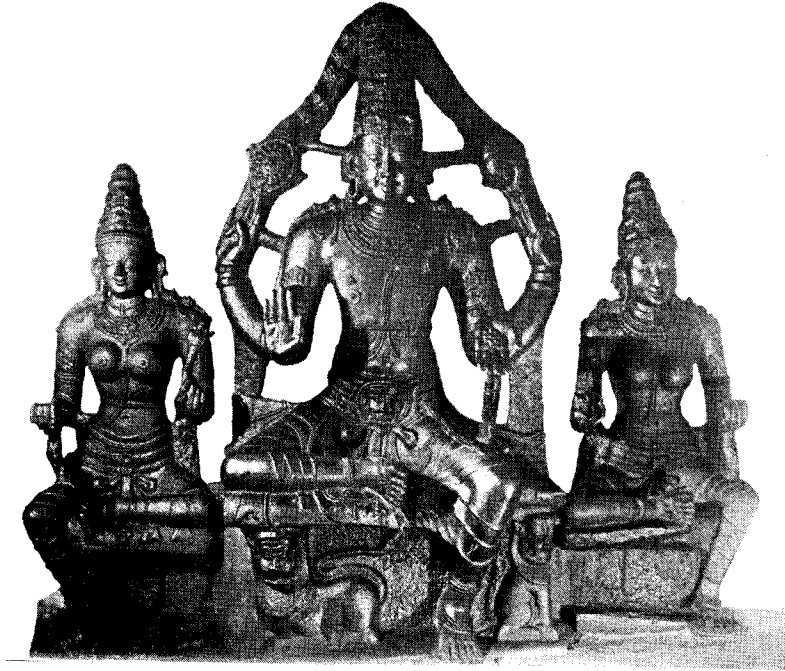
Yaksha, Bandalike, Shimoga District



Neminatha, Shanthinatha Basti  
Kambadahalli, Mandya District



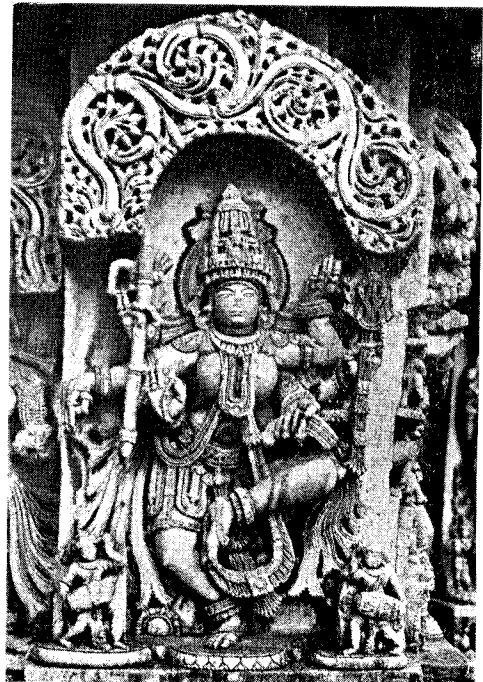
Parshvanatha, Old Basti, Varuna,  
Mysore District



Vijayendraswami and his consorts, Betamangala, Kolar District



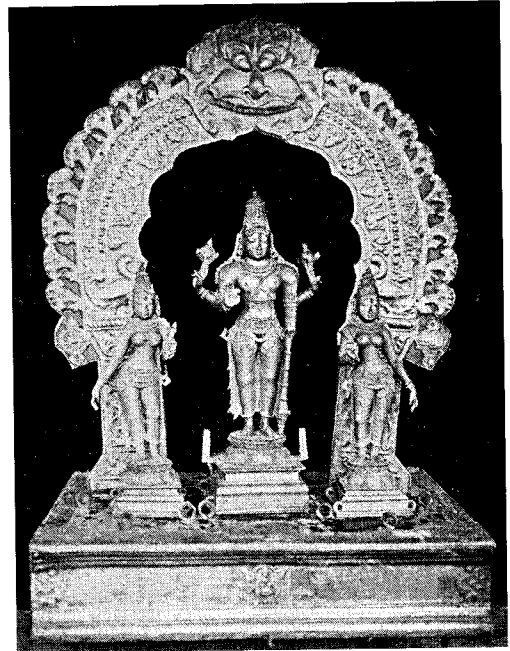
Saraswathi, Malleshwara Temple  
Huliyur, Tumkur District



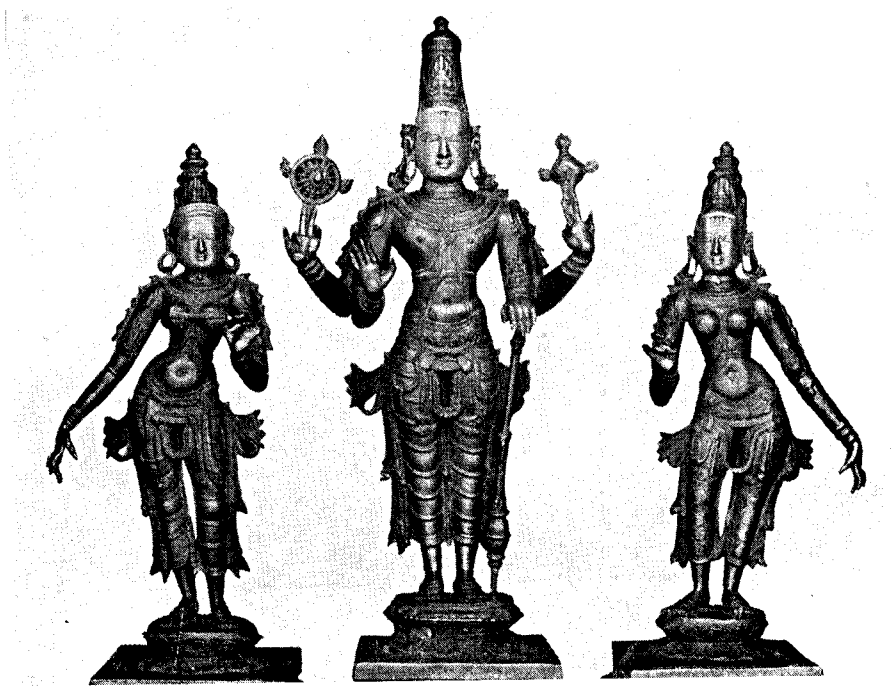
Saraswathi, Lakshminarayana Temple  
Hosaholalu, Mandya District



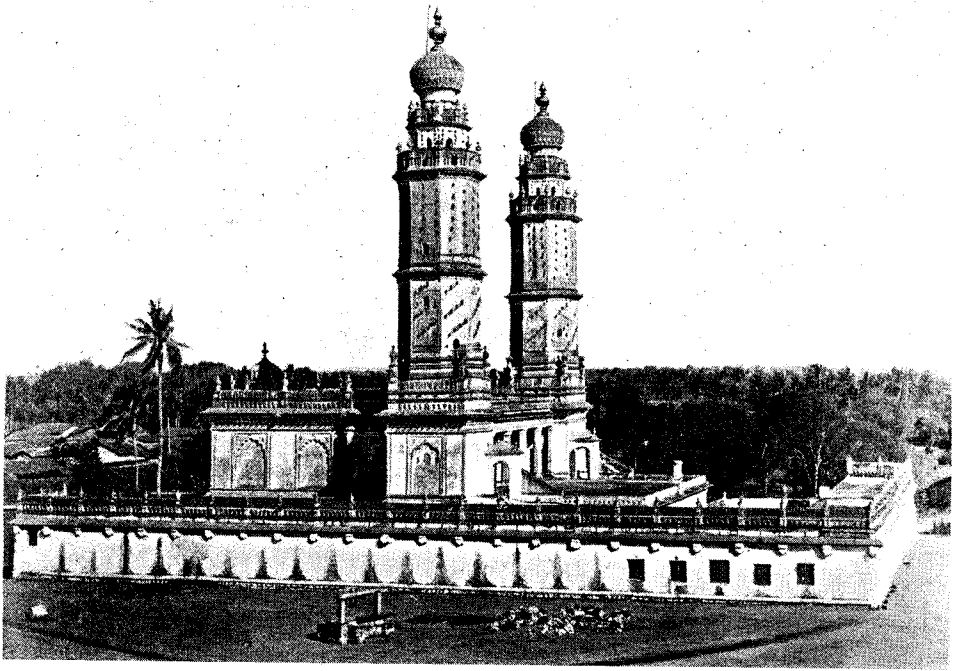
Nataraja Icon, Someshwara Temple  
Kolar



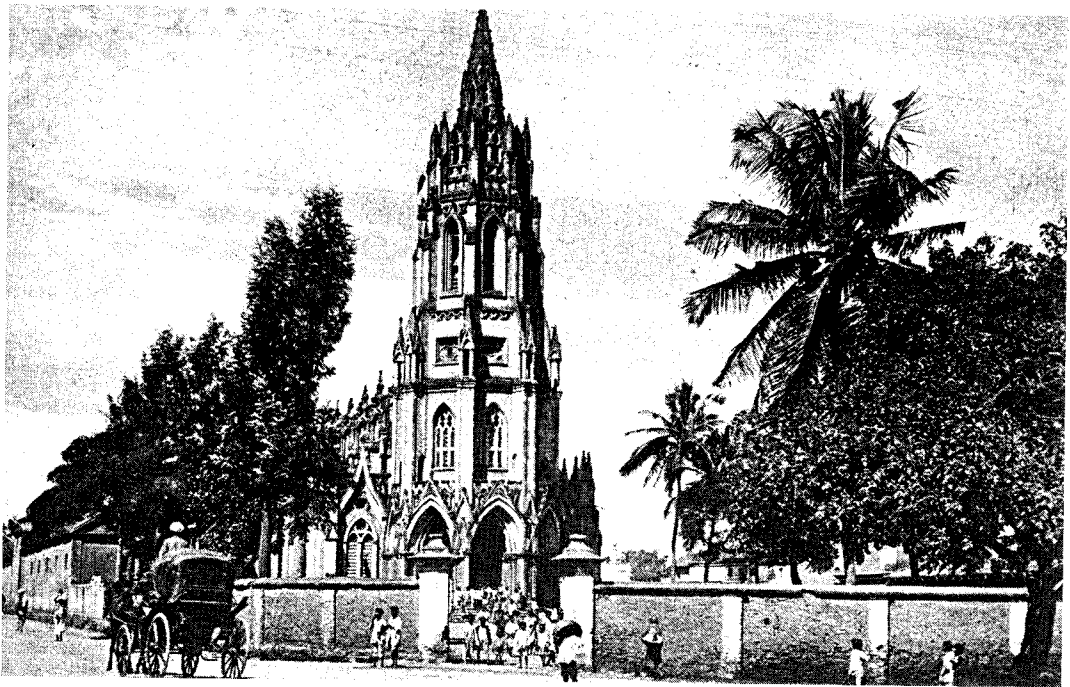
Venugopala, Himavad Gopalswamy  
Hill, Mysore District



Metallic Icon, Gopalswamy Temple, Nonavinakere, Tumkur District



Jumma Masjid, Srirangapattana, Mandya District



St. Mary's Basilica, Bangalore, a photograph from the early 20th Century